

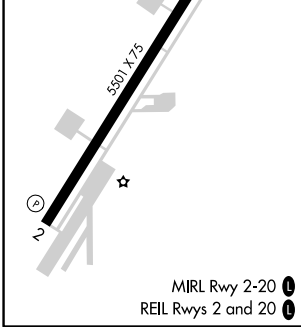
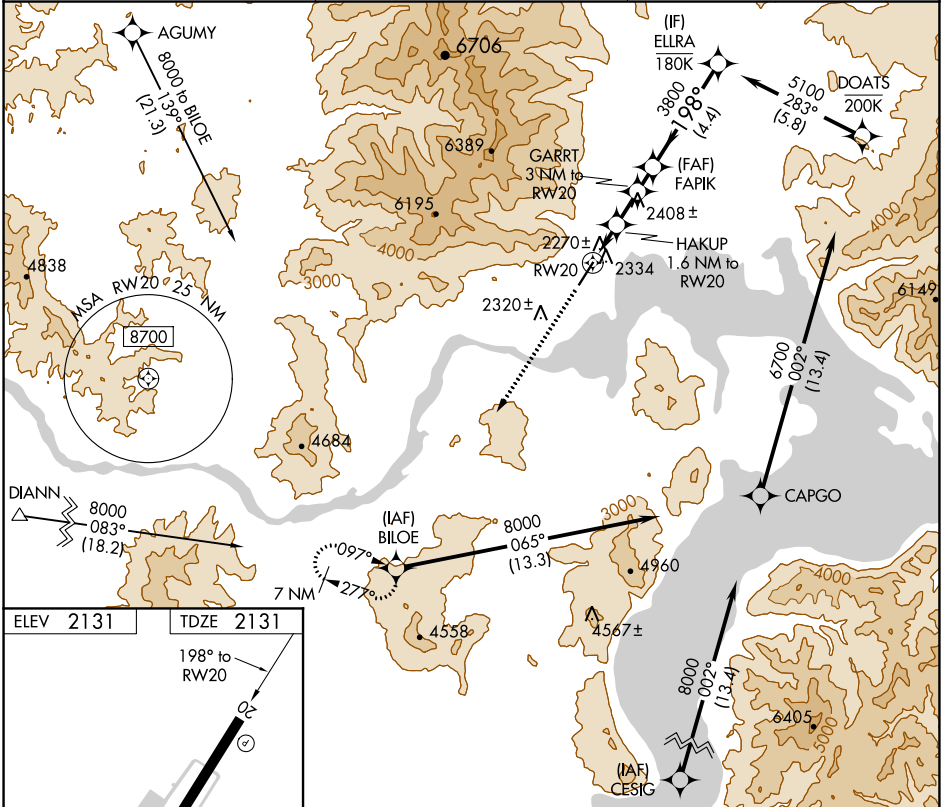
WAAS CH <b>99542</b> <b>W20A</b>	APP CRS <b>198°</b>	Rwy Idg TDZE Apt Elev	<b>5501</b> <b>2131</b> <b>2131</b>
--	------------------------	-----------------------------	---

# RNAV (GPS) Z RWY 20

SANDPOINT (SZT)

RNP APCH.	MISSED APPROACH: Climb to 6600 direct BILOE and hold, continue climb-in-hold to 6600. * Missed approach requires minimum climb of 318 feet per NM to 4500; if unable to meet climb gradient, see RNAV (GPS) Y RWY 20.
<p><b>▼</b> Rwy 20 helicopter visibility reduction below 3/4 SM NA. When local altimeter not received, procedure NA.</p>	

AWOS-3 <b>135.425</b>	SEATTLE CENTER <b>123.95 290.55</b>	UNICOM <b>122.7 (CTAF)</b>
--------------------------	--	-------------------------------



6600	BILOE	VGSi and descent angles not coincident (VGSi Angle 3.75/TCH 50).		ELLRA
		HAKUP 1.6 NM to RWY 20	GARRT 3 NM to RWY 20	FAPIK
		0.9 NM to RWY 20	3380	3800
		0.9 NM	0.7 NM	1.4 NM
			1 NM	4.4 NM
				5100
				377° TCH 55
				198°
				2820
CATEGORY	A	B	C	D
LP MDA*	2520-1	389 (400-1)	2520-1 1/8 389 (400-1 1/8)	NA

NW-1, 14 JUL 2022 to 11 AUG 2022

NW-1, 14 JUL 2022 to 11 AUG 2022